

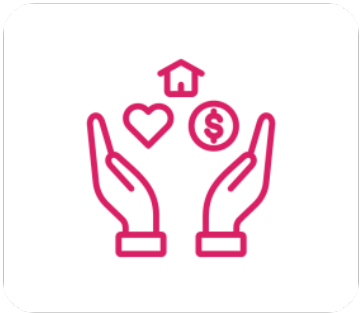


**Project Monarch's mission is to support women as they leave our organization. At the end of their 3 to 5-year journey, around ten women a year go off on their own, to start a new chapter in their lives with their little ones.**

For some, the prospect of moving can be a daunting one. That's why we want to support them in this new adventure. We want to do everything we can to help them take this important step, by offering personalized support. We are therefore looking for partners who would like to join us to ease this transition and have a concrete impact on these families.

**DONATE**

From one family to the next, needs vary, but here's what we're mainly looking for:



### Basic needs

Everything you need to take care of your health and your environment: Food, basket of perishables, prepared meals, first-aid kits, personal hygiene products, cleaning products, etc.



### Telecommunications

Everything you need to study, work, stay connected and informed: Televisions, cellular phones and packages, computers, tablets, etc.



### Moving, installation, furniture and decoration

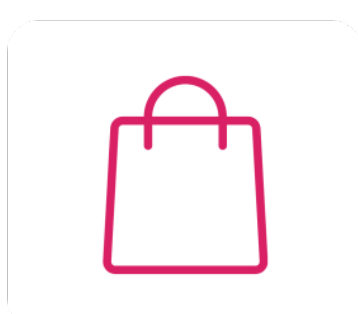
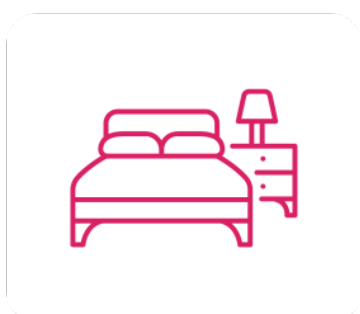
Everything you need to create a cozy, welcoming home: moving and installation services, furniture and decorating, bedding, hardware, etc.



### Transportation

Driving courses and license fees, OPUS cards or taxi vouchers, moving services, etc.

What about the little ones? Project Monarch cares too!



### Education savings account

Each child will have an education savings account opened in his or her name at the time of departure, including an introductory amount. The future is theirs!

### A well-equipped new beginning!

To ensure a well-rounded new start, we'd like each child to have a well-appointed room, with appropriate new furniture. And don't forget the clothes and school supplies you'll need for the new school year!

### The Comfort Bag

To make the transition as smooth as possible, each child will leave with a "Sac Réconfort", which will contain: a new toy and a book; a comforting item (plush or soft blanket, for example), as well as a nightlight to make sure they sleep soundly and safely.

---

### **Contribute and be part of their flight!**

Does the project appeal to you? Would you like to contribute? Would you like to make a monetary, product or service donation? Would you like to become a sponsor and gain visibility for your company? Don't hesitate to contact us. Project Monarch supports the transition of a dozen small families a year to fully independent living. Help us provide support tailored to the needs of each family. Several options are available. We'd be delighted to discuss them with you!

**DONATE**



Many thanks to our partners

Rachelle  
Béry 

 Trudeau.

---

# Make a donation!

**Message to all our donors :**

The Zeffy platform offers you the option of adding a tip. **If you do not wish to add a tip, in the confirmation message, simply choose Other from the drop-down menu, then enter \$0 or the amount of your choice.**

<https://www.zeffy.com/fr/embed/donation-form/691f53b1-459a-4eff-b65e-73f983bd3aea>